

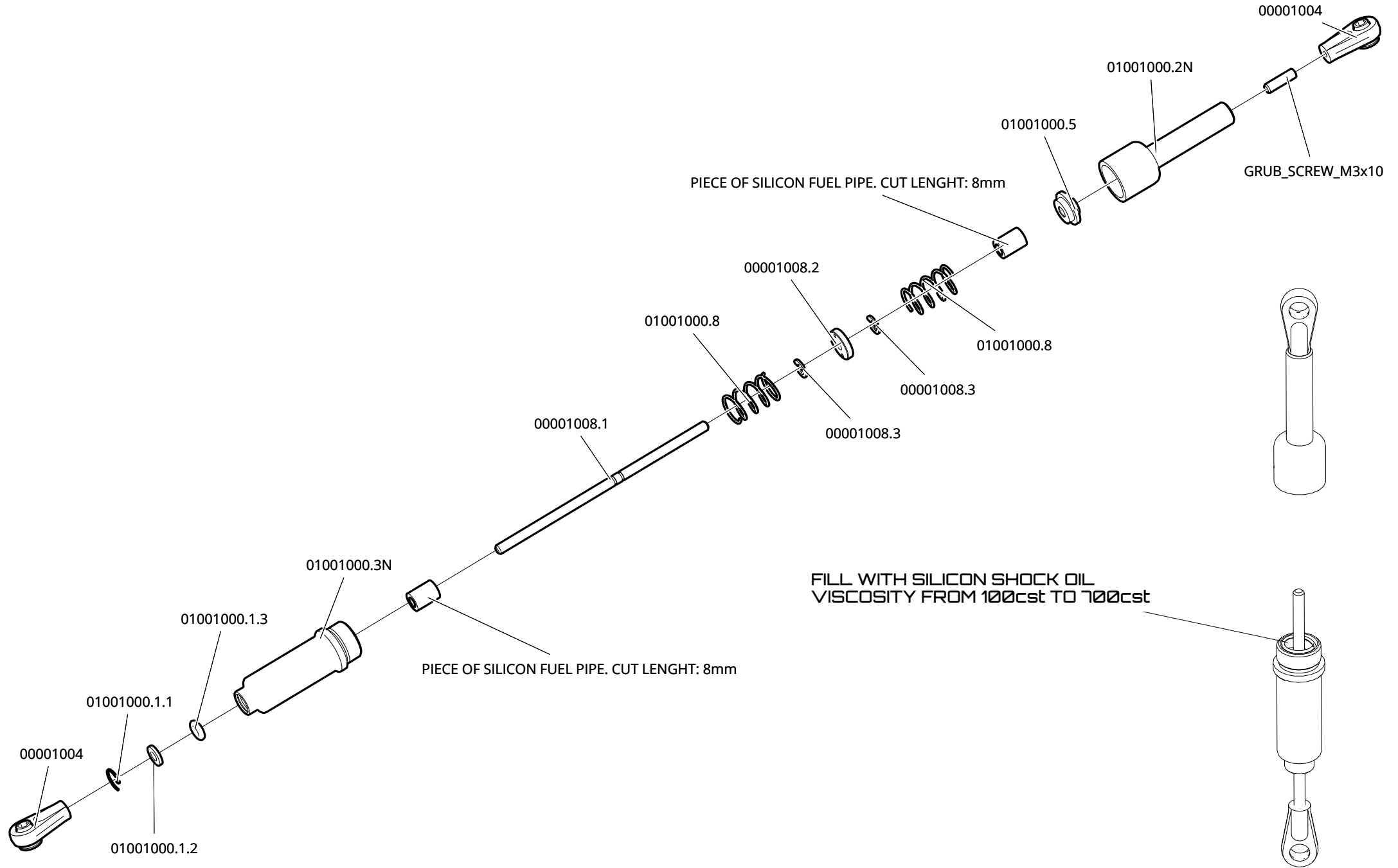
R/C

Evolution

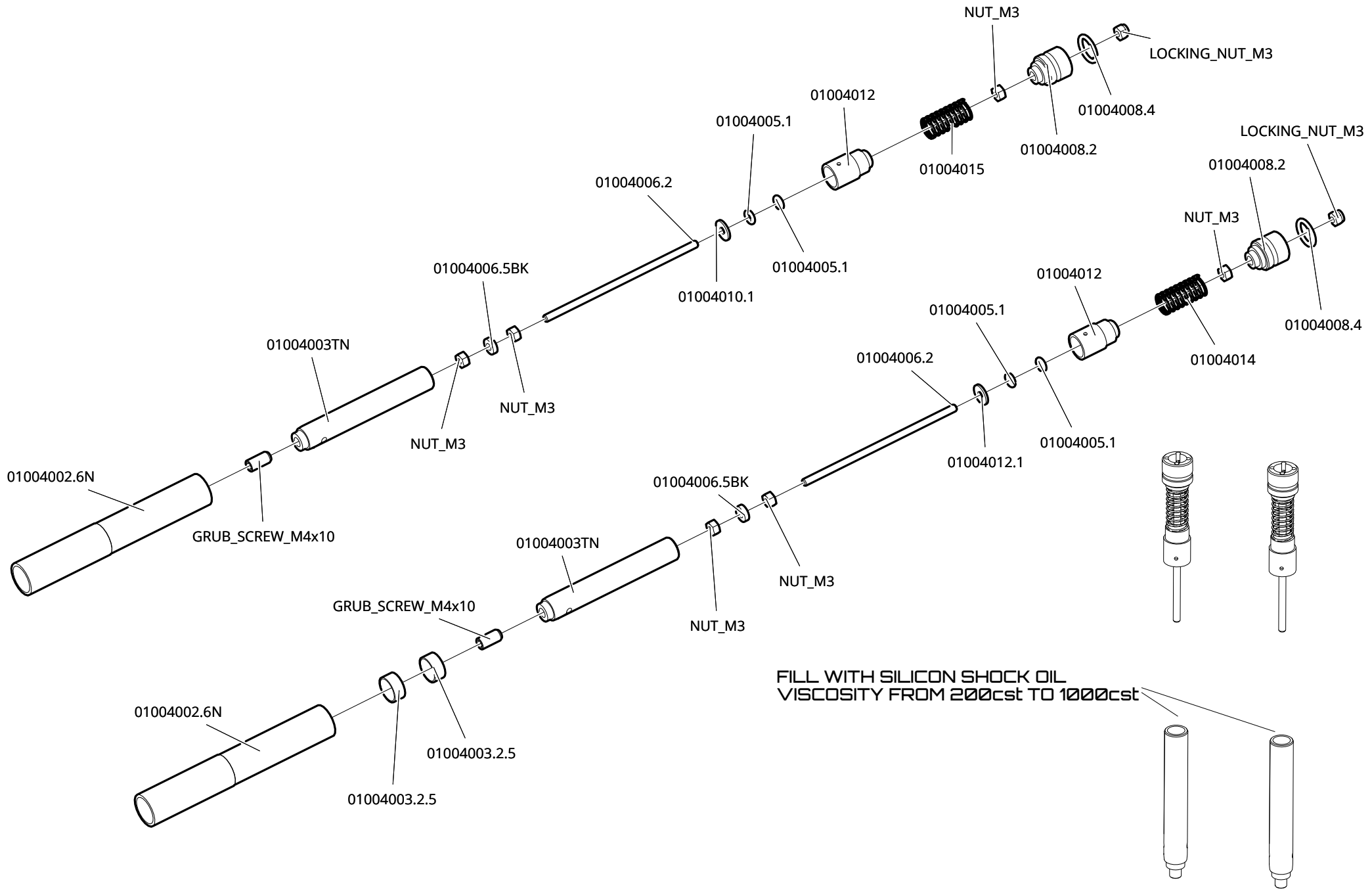
BK1R Instruction Manual



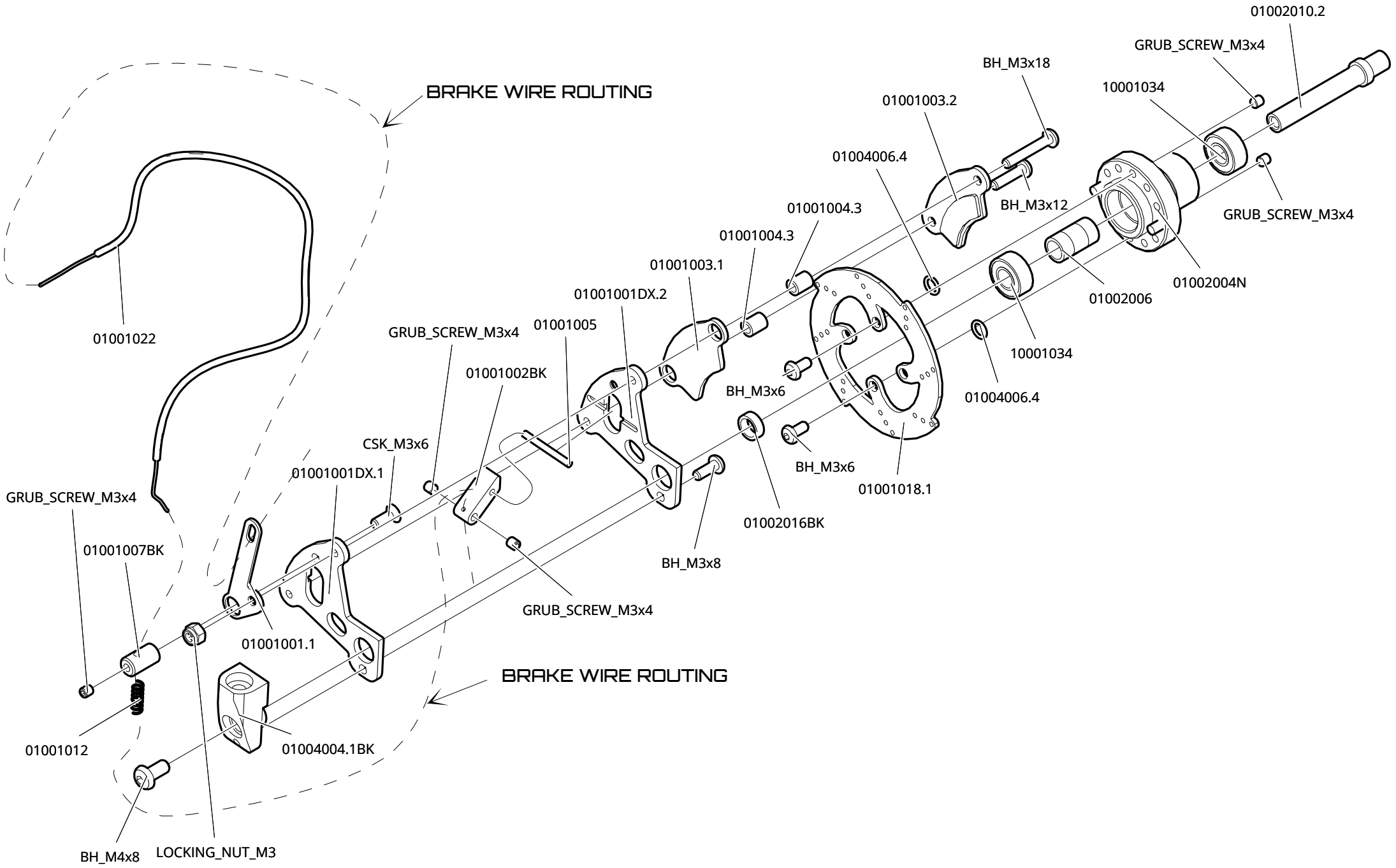
2 - Steering Damper



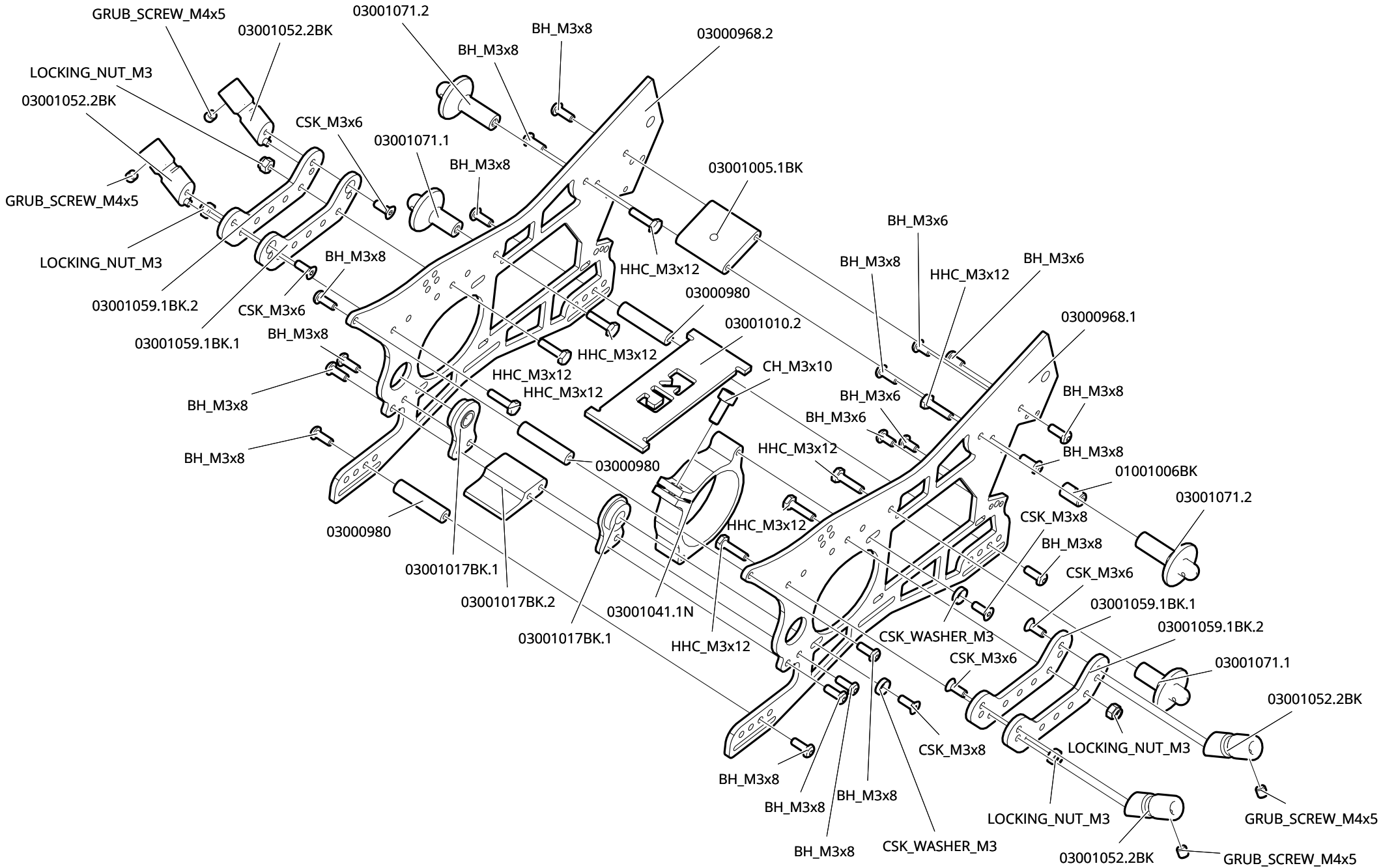
3 - Front Forks



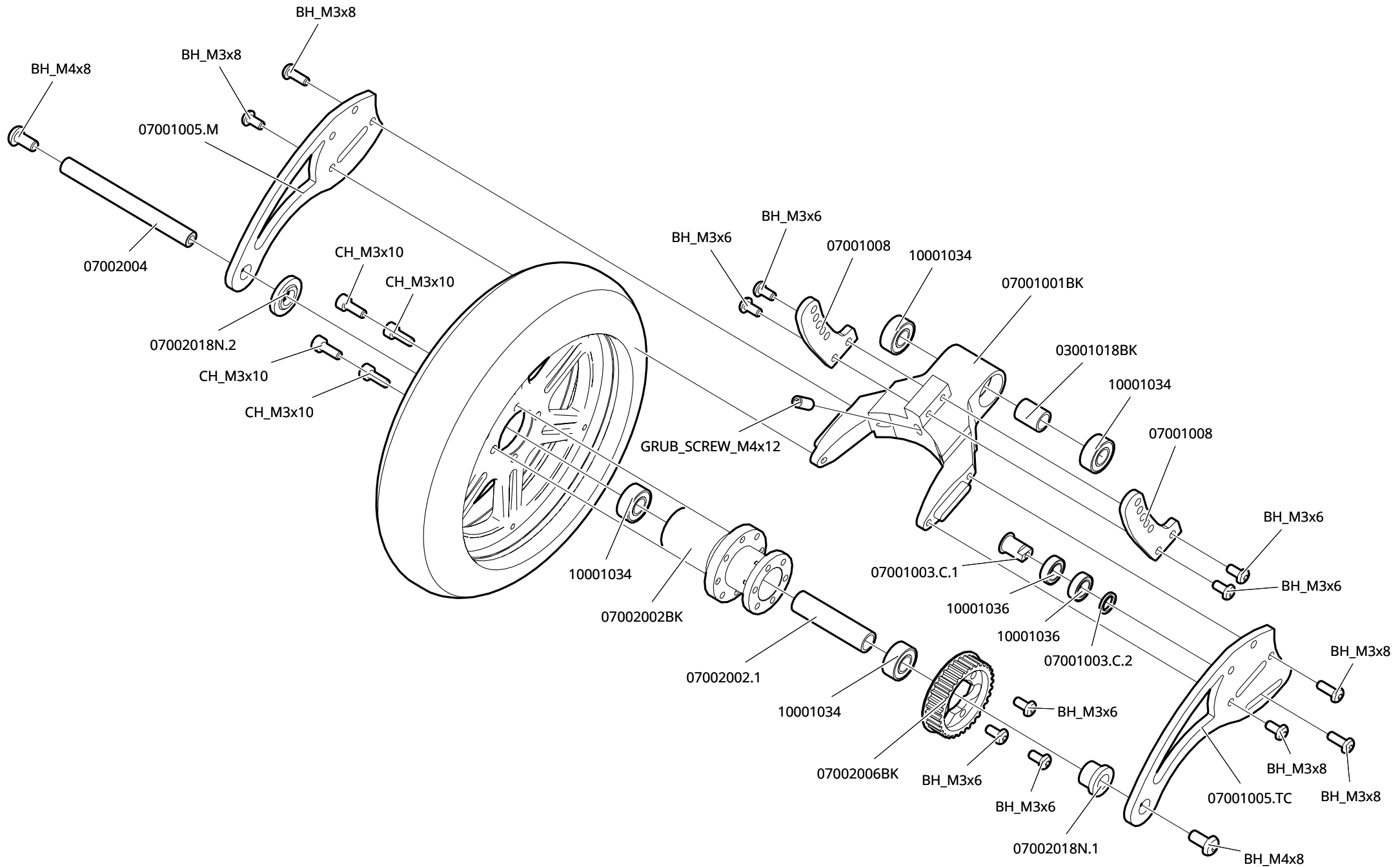
4 - Front Brake



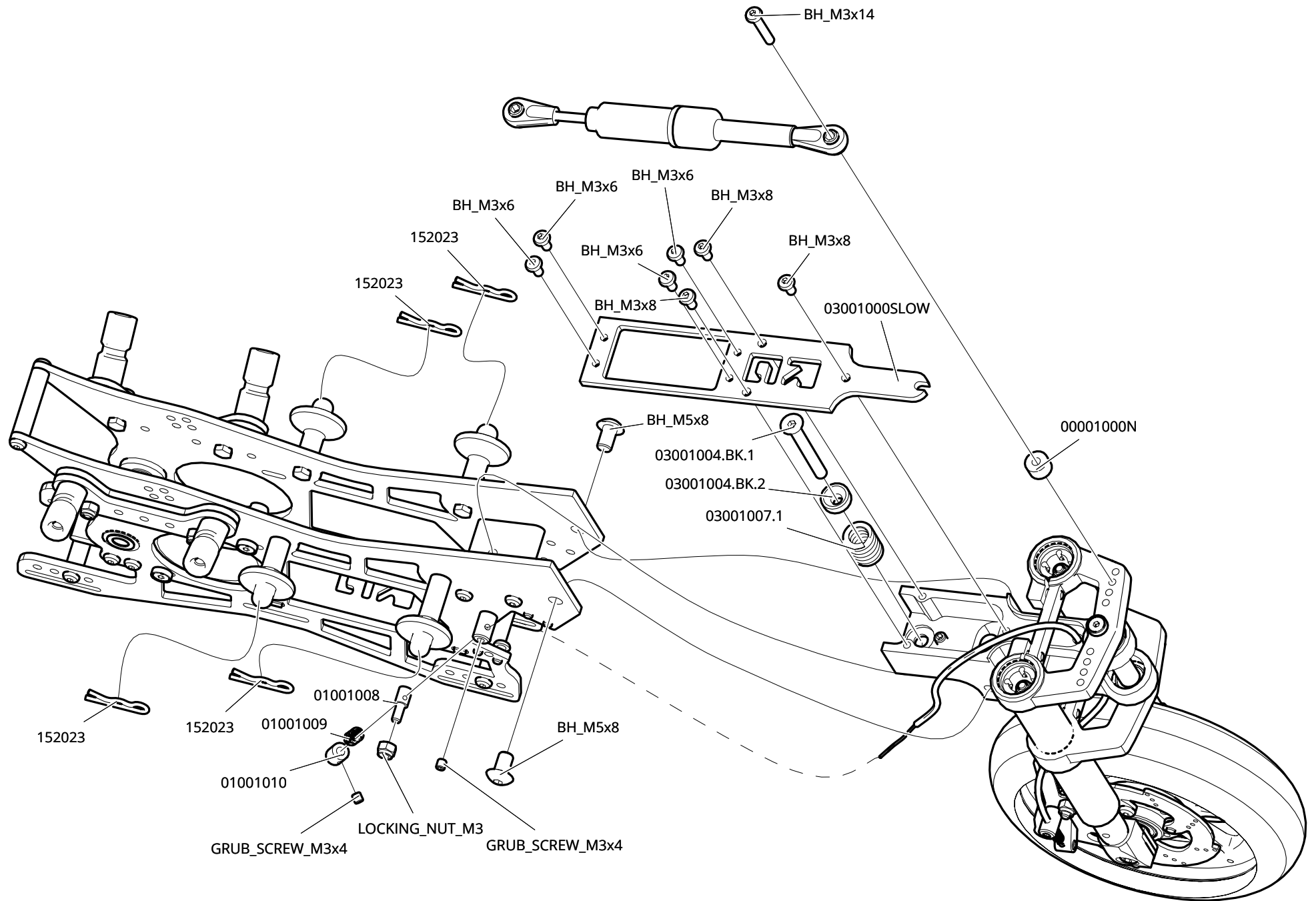
5 - Chassis



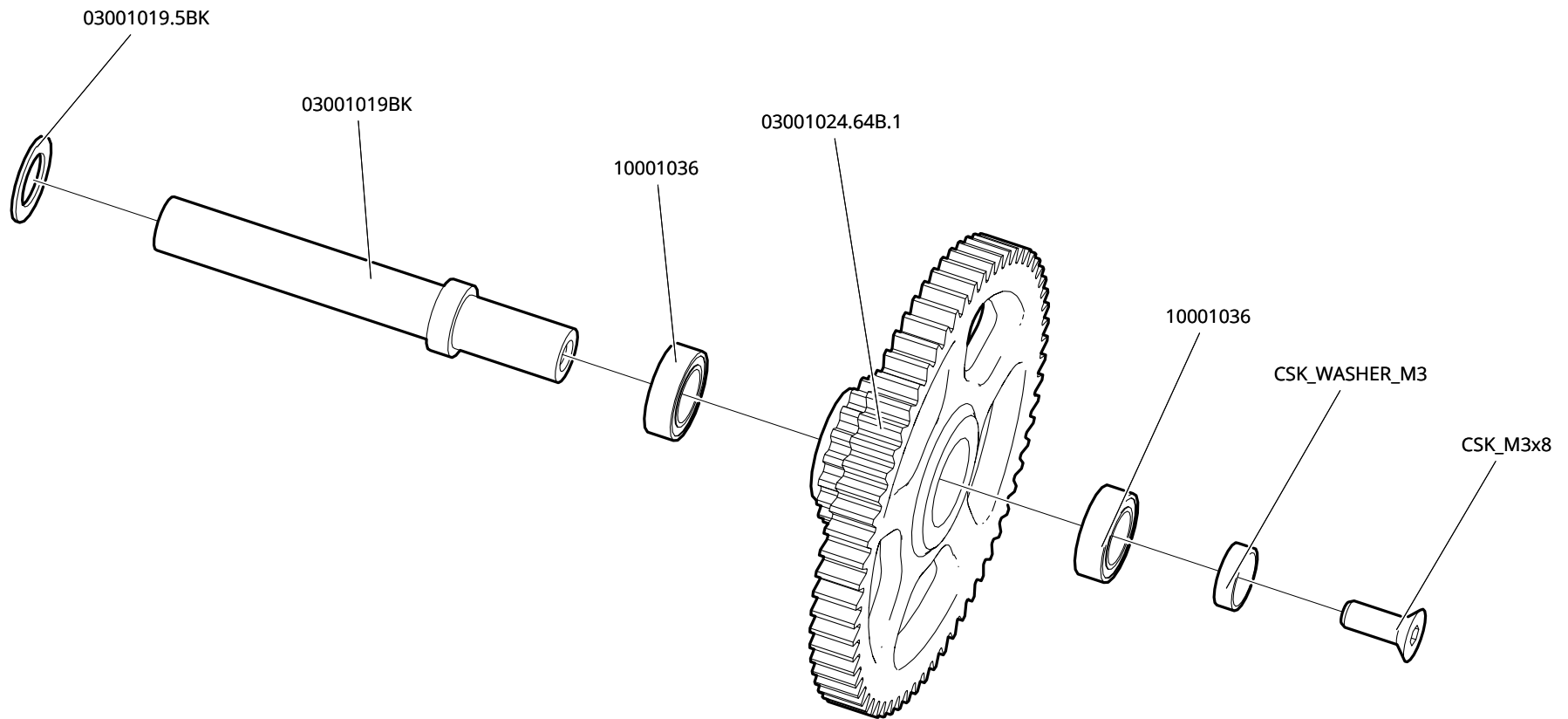
6 - Rear End



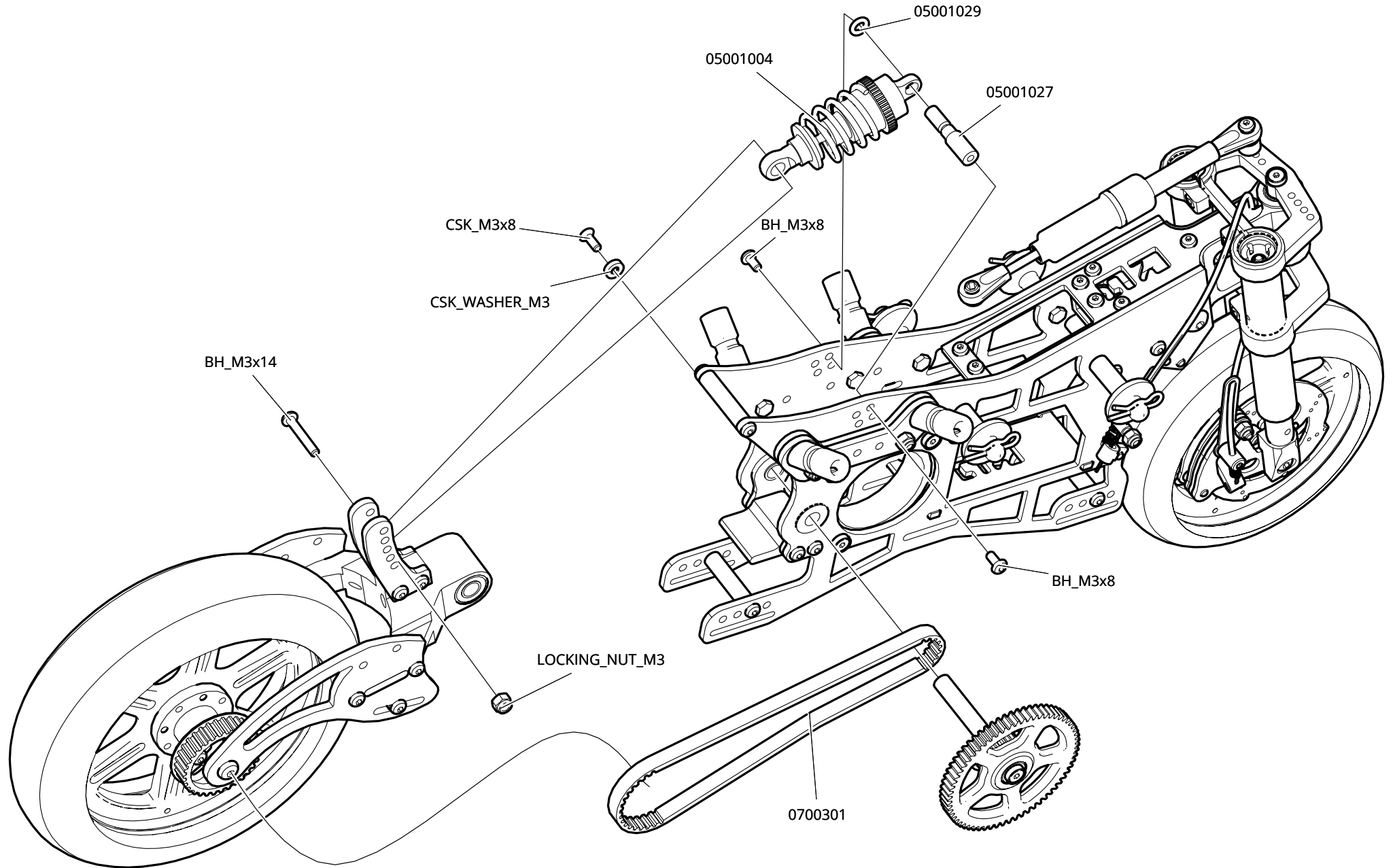
8 - Front Assembly



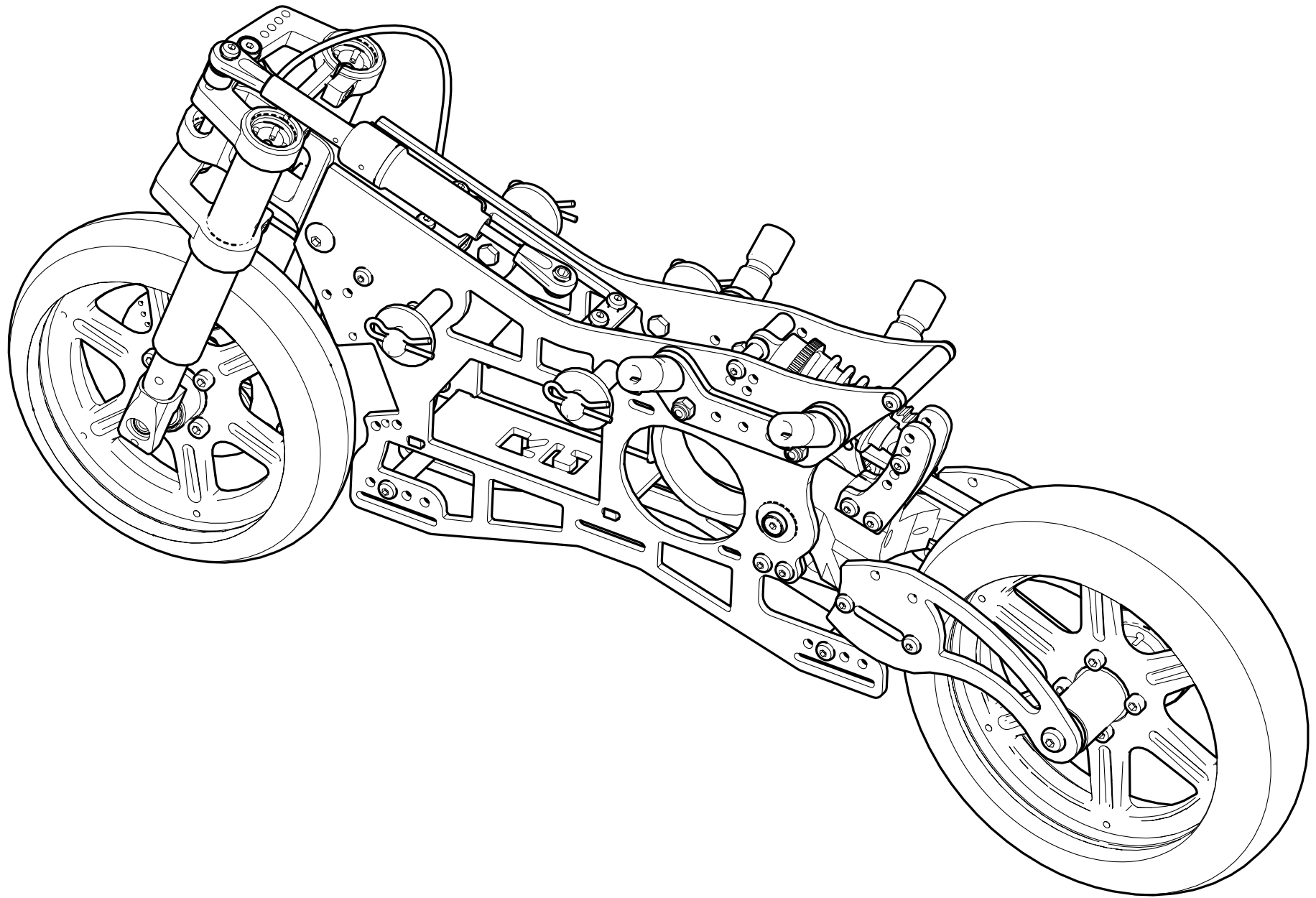
9 - Transmission

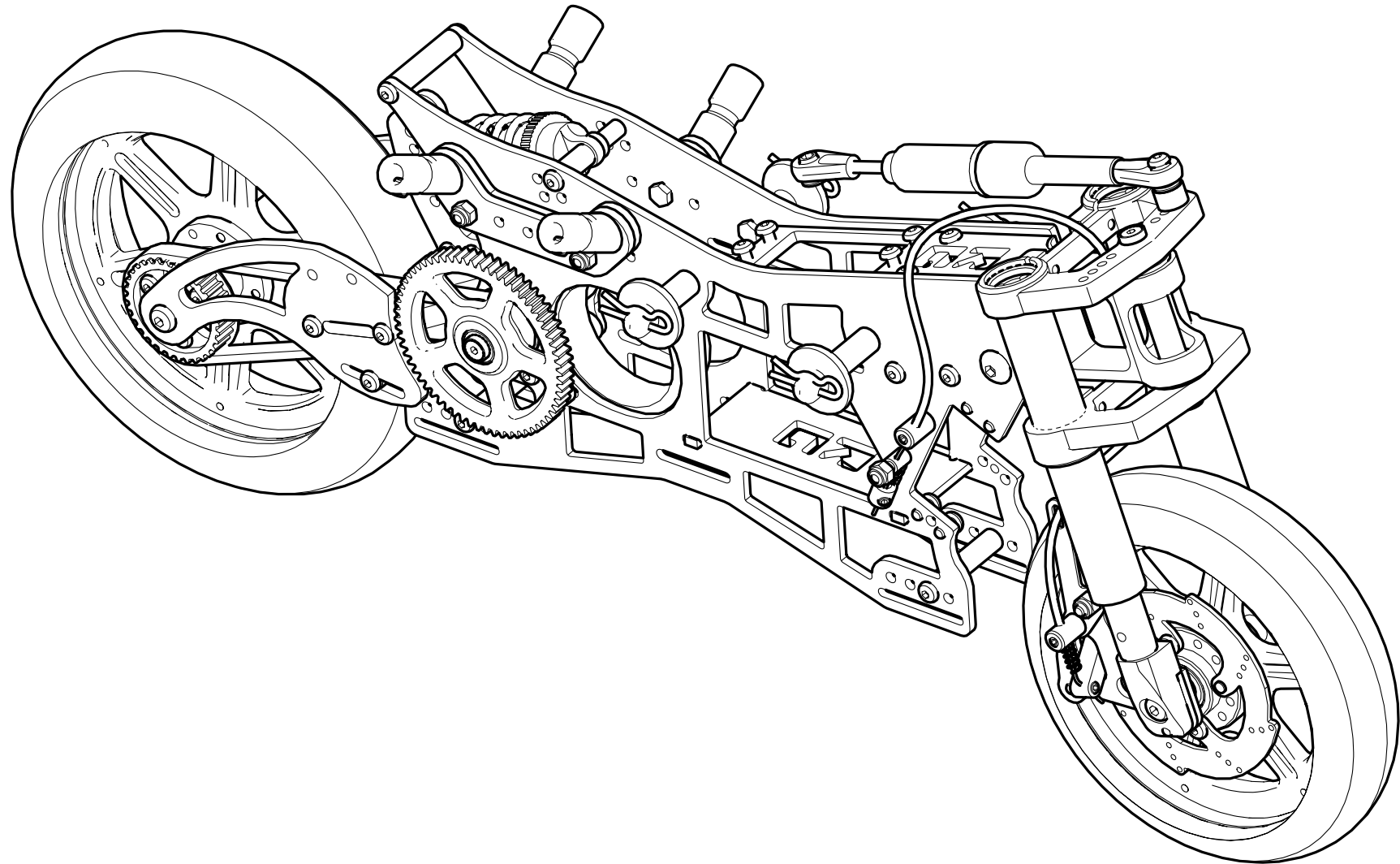


10 - Rear Assembly



11 - Complete Left



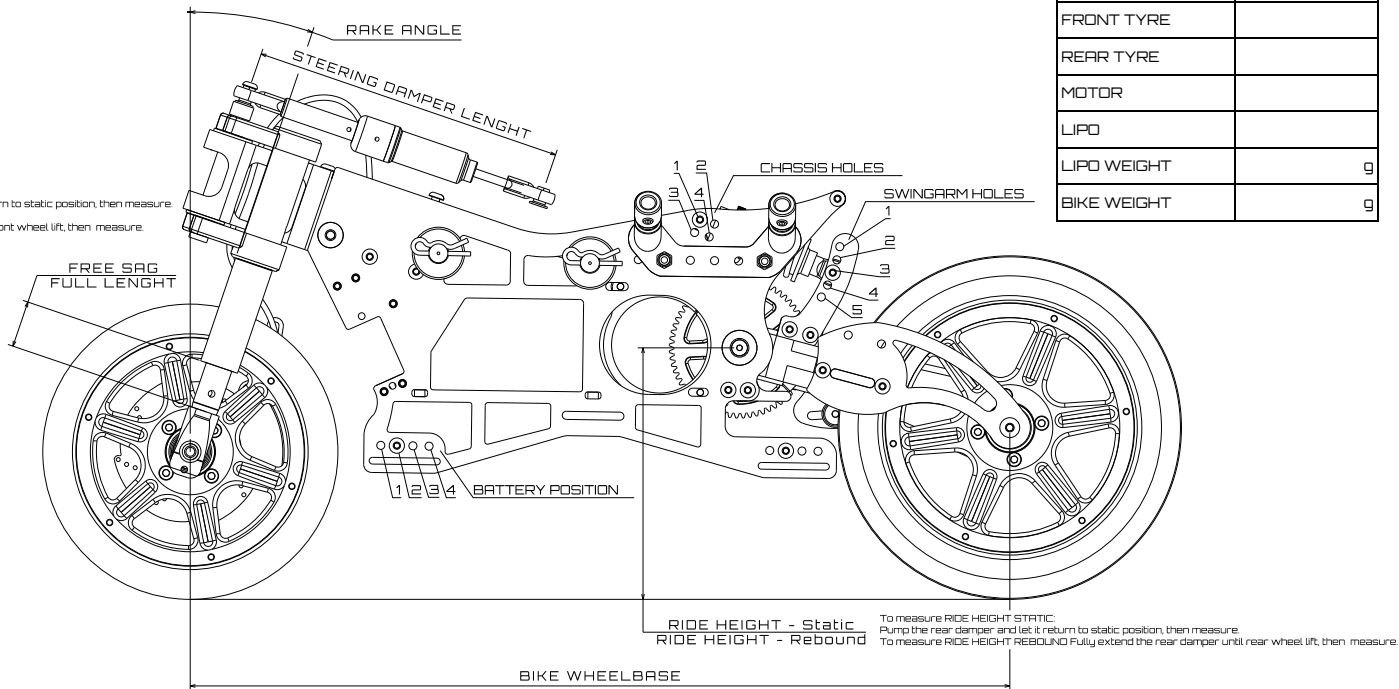


RC Evolution

BK1R Setup Sheet

RACE INFORMATIONS	
TRACK	
DATE	
GRIP	

OTHER	
ELECTRONICS	
STEERING SERVO	
BRAKE SERVO	
ESC	
FRONT TYRE	
REAR TYRE	
MOTOR	
LIPO	
LIPO WEIGHT	g
BIKE WEIGHT	g



FRONT FORK		
OIL		cst
LEFT SPRING	Ø.6 Ø.7 Ø.8	
RIGHT SPRING	Ø.6 Ø.7 Ø.8	
FREE SAG		mm
FULL LENGHT		mm
RAKE ANGLE		deg
NAI SYSTEM	YES NO	

BATTERY				
POSITION	1	2	3	4
WEIGHT	g			
WEIGHT POSITION	FRONT		REAR	

TRIPLE CLAMPS		
MODE	Ø	1 2

FRONT HUB		
MATERIAL	ALU	STEEL
BRASS WEIGHT	YES	NO

TRANSMISSION	
PINION	
SPUR	
MAIN PULLEY	
REAR PULLEY	
BELT WIDHT	mm

REAR DAMPER				
OIL		cst		
SPRING	23lb	32lb	40lb	
PISTON HOLE	1	2	3	4
LENGHT	mm			
DOUBLE EFFECT	YES	NO		
SPRING PRELOAD	mm			
RIDE HEIGHT - STATIC	mm			
RIDE HEIGHT - REBOUND	mm			
CHASSIS HOLE	1	2	3	4
SWINGARM HOLE	1	2	3	4 5

STEERING DAMPER				
OIL		cst		
SPRING 1	Ø.7 Ø.8 Ø.8prog			
SPRING 2	Ø.7 Ø.8 Ø.8prog			
LENGHT		mm		
MOUNTING HOLE	1	2	3	4
SERVO HORN LENGHT	mm			
LINK TYPE	STRAIGHT		CROSS	

CRASHBARS			
POSITION	FRONT	MIDDLE	REAR
ANGLE TYPE	10°	20°	30°
LEAN ANGLE LEFT	deg		
LEAN ANGLE RIGHT	deg		
CRASHBAR WIRE			

REAR SWINGARM			
LENGHT	SHORT	STD	LONG
BIKE WHEELBASE	mm		

